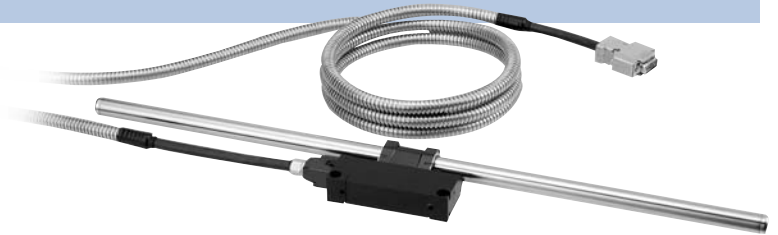


SJ

SJ300 SERIES

legendary Magnescale technology has been improved!

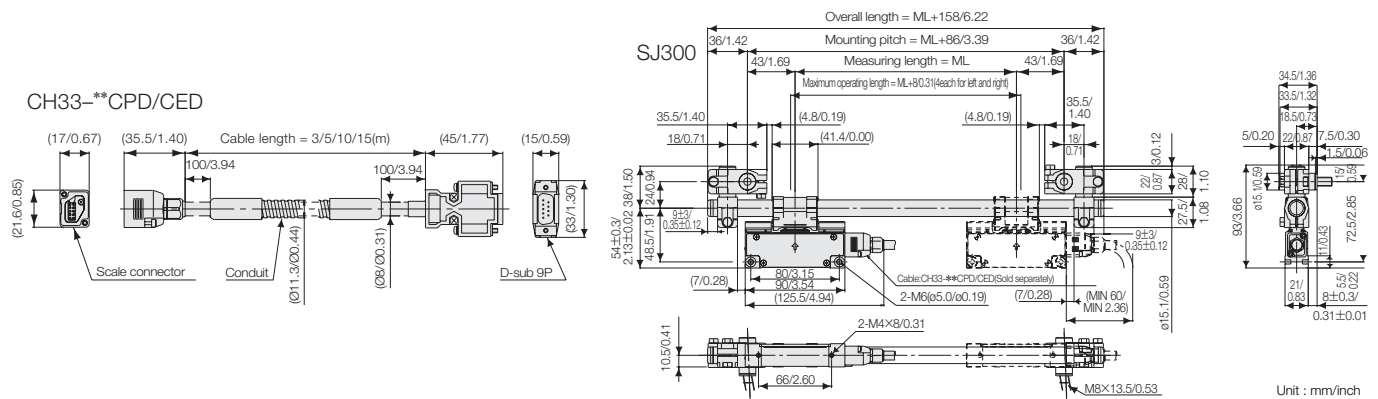
- Flexible Reader Head mounting provides wider installation tolerances and less installation time.
- Excellent resistance to workshop conditions (IP64)
- Classic Magnescale benefits: No cleaning or maintenance, and no scratched or broken glass.
- No machined surface or backer bar required.
- Reader Head Status lamp provides visual signal status.
- Scale mounting brackets slide and rotate to accommodate a wide range of installation configurations.
- Removable cable for easy replacement.



Scale	Cable	Counter
SJ300	CH33	LH70 / LH71, LH72 LY71, LY72, LG20

MAGNESCALE®

Dimensions



Specifications

Model	SJ300-005 to SJ300-220
Effective length L:mm	50,100,150,200,250,300,350,400,450,500,550,600,650,750,800, 850,950,1050,1250,1400,1600,1850,2050,2200
Overall length	L+158mm
Accuracy(20°C)	±10µm/m
Resolution	1µm
Max. response speed	60m/min
Output signal	AB quadrature (compliant with EIA-422)
Min. output phase difference	200ns
Expansion coefficient	(17±1)×10 ⁻⁵ /°C
Status lamp functions	Low Scale signal / Low power supply voltage
Max. cable length	15m
Power supply voltage	5V±5%
Power consumption	2.5W or less(With load)
Operating temperature	0 to 45°C
Storage temperature	-20 to 60°C
Vibration resistance	20m/s ² ,50Hz to 2kHz
Shock resistance	600m/s ² ,11mm/s
Protective design grade	IP65(Or equivalent)

Specifications

Model	CH33-							
	03CPD	05CPD	10CPD	15CPD	03CED	05CED	10CED	15CED
Cable length L(m)	3	5	10	15	3	5	10	15
Cable sheath	PVC				Polyurethane			
Cable armor	Yes							
Protective design grade	IP65(Scale Side Connector)							